

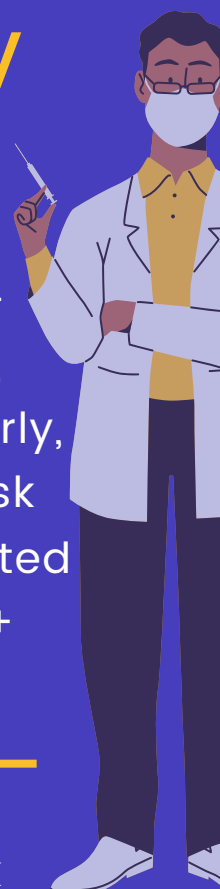
RSV Vaccine Fact Sheet

What is RSV?

Respiratory Syncytial Virus (RSV) is a common cause of respiratory illness. It can cause infection in the upper (e.g., nose and throat) and lower (e.g., lower airways and lungs) respiratory tract.

What is the RSV vaccine?

The RSV vaccine is a safe and effective 0.5mL single-dose recombinant vaccine, administered intramuscularly, that aids in reducing the risk of developing RSV-associated illnesses for individuals 60+ years of age.



Who is at risk?

For adults 60+ years of age, data suggest an increased risk for severe RSV infection that can lead to hospitalization. Older adults are at high risk for severe disease due in part to age-related decline in immunity, and older adults with some underlying conditions are at even greater risk for severe disease. RSV can exacerbate conditions, including chronic obstructive pulmonary disease (COPD), asthma, diabetes, and congestive heart failure and can lead to severe outcomes, such as pneumonia, hospitalization, and death.



RSV season is generally between November and April.

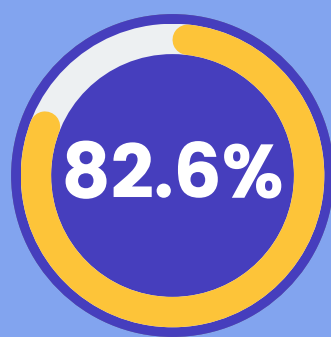


Who is eligible?

Individuals 60+ years of age and living in long-term care homes and residents of retirement homes licensed to provide dementia care.

Approval of the RSV vaccine was based on a Phase III clinical trial program.

RESULTS



VACCINE EFFICACY

for prevention of lower respiratory tract disease caused by RSV in older adults



VACCINE EFFICACY

in those with underlying medical conditions



ADVERSE REACTIONS
SEE 'COMMON SIDE EFFECTS'

reported in participants 60+ years old

Common Side Effects

- Pain or swelling at injection site
- Fatigue
- Fever or chills
- Headache
- Nausea
- Diarrhea
- Muscle aches or joint pain

The RSV vaccine does not contain the RSV virus and cannot cause an infection.

Similar to all vaccines, it may not fully protect all people who are vaccinated.

Do not get the RSV vaccine if you:

- Have received another vaccine within the last 2 weeks
- Have a history of severe allergic reaction to any vaccine ingredients¹ or non-medical ingredients¹ or materials found in the vaccine's packaging (e.g., vial cap, aluminum seal, or synthetic rubber stopper)
- Have experienced a reported AEFI and not consulted your doctor
- You have been treated with allogeneic processed thymus tissue
- Have a bleeding problem or bruise easy
- Are febrile or have severe acute illness

¹ Respiratory Syncytial Virus PreF3 (RSVPreF3), Quilaja saponaria Molina, fraction 21 (QS-21), 3-O'-desacyl-4'-monophosphoryl lipid A (MPL), Trehalose dihydrate, Polysorbate 80, Potassium dihydrogen phosphate, Dipotassium phosphate, Dioleoyl phosphatidylcholine, Cholesterol, Sodium chloride, Disodium phosphate, anhydrous, Potassium dihydrogen phosphate, Water for injection



November 2023

Please speak with your health care provider if you have questions regarding the available RSV vaccines.