

# THE SPOKE

South East  
**IPAC**  
HUB & SPOKE



EDUCATION  
PRACTICE  
POLICY  
PARTNERS

Quinte | Rural Hastings | Rural Frontenac | Lennox & Addington | Lanark, Leeds & Grenville

South East Region Infection Prevention and Control Hub Newsletter

June 2025

## South East IPAC Hub Update

On Thursday, April 3, 2025, the South East IPAC Hub proudly hosted our first in-person workshop for Long-Term Care IPAC Leads. Held at the INVISTA Centre in Kingston, the half-day event focused on the theme of *Surveillance* and welcomed enthusiastic participation from across all areas within the South East Health Unit region.

The workshop featured a dynamic lineup, including a keynote speaker, our Hub's epidemiologist, and three experienced IPAC Leads who shared valuable insights into their surveillance practices. Attendees engaged in an interactive case-based session, working together to determine whether three fictional residents met infection case definitions and if they qualified as healthcare-associated infections. Group discussions highlighted unique considerations in classifying cases, enriching the learning experience.

Thanks to the generous support of our three event sponsors, participants enjoyed a welcoming atmosphere complete with gift bags, access to surveillance tools and educational resources, and the chance to win draw prizes.

The energy and engagement at the workshop inspired the Hub to host a summer social to extend the opportunity of meaningful connections amongst IPAC professionals in the South East region. On Thursday, June 19<sup>th</sup> the Hub held 'IPAC in the Park' at Lake Ontario Park in Kingston. The networking event included a sponsored BBQ, and attendees were inspired by an Organizational Development Advisor, from KHSC, who led an interactive session "*Lead Where You Stand*", focused on leadership and change management.

IPAC in the Park had great takeaways to apply to our day-to-day operations, helping us to develop as effective leaders.

As we get ready to enjoy summer vacations, we keep in mind that fall is 'around the corner'. Respiratory preparedness can start as early as now with refreshers along the way.

### CONGRATULATIONS CORNER



- |   |  |
|---|--|
| ★ ★ Krystal Brunette, LTC-CIP<br>Caressant Care Marmora | ★ ★ Bhawana Sharma, LTC-CIP<br>Hastings Manor      |
| ★ ★ Amy Harper, LTC-CIP<br>Kentwood Place               | ★ ★ Laura Cranston, LTC-CIP<br>Westgate Lodge      |
| ★ ★ Kelly Ellis, LTC-CIP<br>Pine Meadow                 | ★ ★ Ania Skirlo, LTC-CIP<br>Rosebridge Manor       |
| ★ ★ Roxanne Gimera, LTC-CIP<br>Maple View Lodge         | ★ ★ Dawn Davidson, LTC-CIP<br>Belmont LTC Facility |

### In this Issue:

- SE IPAC Hub Update
- Education & Events
- Congratulations Corner
- MOLTC Update
- Bug Watch: *Shingles*
- IPAC Spotlight: *Red Cedars*
- Contact the Hub

### Education & Events

#### July

- **July 8:** IPAC EO Novice Infection Control Network
- **July 18:** Ethical Decision-Making Framework 2025 Survey Results

#### August

- **August 5:** IPAC EO Novice Infection Control Network

#### September

- **September 2:** IPAC EO Novice Infection Control Network



### Ministry of Long-Term Care Update

**Amendment to O. Reg 246/22 under *Fixing Long-Term Care Act, 2021* (as of April 11, 2025)**

- LTC licensee must ensure designated IPAC Lead has current CBIC certification or obtains certification within **three** years after the day of designation
  - **Current IPAC Leads have three years from April 11, 2025 to achieve certification** (by April 11, 2028)
  - IPAC leads designated *after* April 11, 2025 will have up to three years from their date of designation to achieve certification
  - Three-year period does not include periods of absence (e.g., parental or sick leave)

[ADM Memo](#) | [FAQ](#)



# BUG WATCH



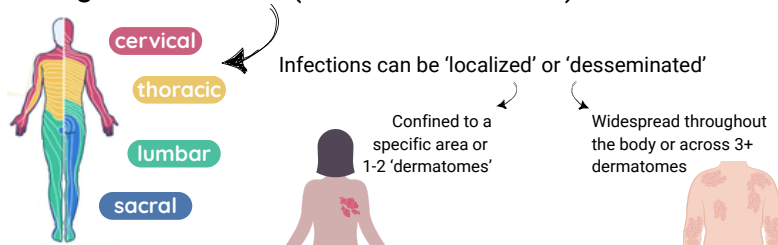
## Shingles

(Herpes Zoster)



### What are Shingles?

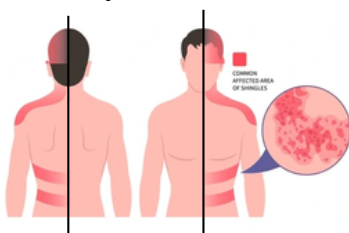
- Viral infection caused by reactivation of the varicella zoster virus (VZV), which also causes chickenpox
- VZV can remain dormant in nerve tissue for years and may reactivate multiple times, especially in individuals over 50
- The virus affects nerve pathways, leading to a rash along dermatomes (nerve distributions).
- Serious complications can include:
  - Scarring or bacterial skin infections
  - Long-term nerve pain (postherpetic neuralgia)
  - Vision and/or hearing loss
  - Pneumonia



### Signs & Symptoms



- Pain, itching or tingling where rash will appear
- Macropapular rash around right or left side of the body, commonly appearing on trunk or face not crossing body's midline

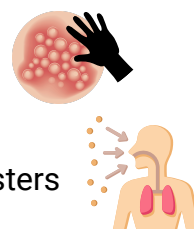


### How are Shingles spread?

You **cannot** get shingles from someone who has shingles.

You **can** get chickenpox from someone with shingles if you did not get a chickenpox vaccine or have never had chickenpox and through these exposure types:

- Direct contact with fluid from shingles rash blisters
- Airborne inhalation of virus particles from shingles rash blisters




### Additional Precautions

Based on resident/client's immune status and rash localization:

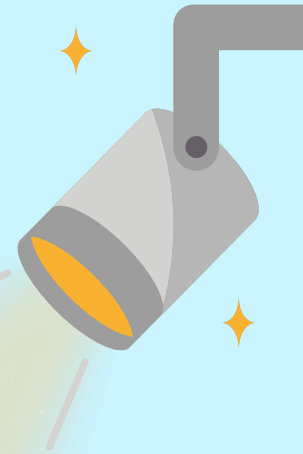
*\*If AIIR is not available:*

*Place case in single room with door and window closed*

Organism/Disease	Category	Type of precaution	Duration of precautions	Comments
Varicella Zoster (Shingles, Zoster) Herpes Zoster	<ul style="list-style-type: none"><li>• Desseminated</li><li>• Immunocompromised</li></ul>	<b>Airborne* &amp; Contact</b> <ul style="list-style-type: none"><li>• Single room</li><li>• Negative airflow</li><li>• Door closed</li></ul> 	Continue precautions until all lesions have crusted and dried	<ul style="list-style-type: none"><li>• Notify IPAC</li><li>• Only staff with presumptive VZV immunity to enter room</li></ul>
	<ul style="list-style-type: none"><li>• Localized</li><li>• Immunocompetent</li></ul>	<b>Routine</b> <ul style="list-style-type: none"><li>• If lesions <i>can</i> be covered</li></ul> <b>Contact</b> <ul style="list-style-type: none"><li>• If lesions <i>cannot</i> be covered</li></ul>	Ongoing  Continue precautions until all lesions have crusted and dried	<ul style="list-style-type: none"><li>• Notify IPAC</li><li>• Roommates to be immune</li><li>• Only staff with presumptive VZV immunity to enter room</li></ul>

Adapted from PIDAC: Routine Practices and Additional Precautions, [Appendix N: Clinical Syndromes/Conditions with Required Level of Precautions](#). (2025)

# IPAC SPOTLIGHT



## RED CEDARS WOMEN'S SHELTER

**IPAC Designate:**  
Jackie Dales, RN BScN CIC



National  
Indigenous  
Peoples  
Day



#NIPD2025

This quarter, we're proud to spotlight a facility that demonstrated outstanding leadership and initiative in preparing for the recent measles outbreak in the community. Red Cedars is a women's shelter located in Shannonville, Ontario. The home is a branch of Mohawks of the Bay of Quinte, where Jackie Dales leads the IPAC program. The team organized a comprehensive tabletop exercise for staff and clients, offering an overview of measles, response protocols, and real world scenarios to work through.

The exercise focused on key actions to take, containment measures, policy review, and timely communication. Notably, the team incorporated culturally safe practices tailored to the community they serve. This proactive effort strengthened staff confidence and highlighted the facility's dedication to client and community wellbeing.

**Contact the Hub: [SEHubIntake@kingstonhsc.ca](mailto:SEHubIntake@kingstonhsc.ca)**



### Service requests

Our team is available for a variety of services, including on-site visits, staff education, outbreak management, IPAC policy review, IPAC resource development and other supports to help enhance your IPAC program.



### IPAC-related questions

Our Hub IPAC practitioners are happy to provide advice on your IPAC-related questions and direct you to best practice resources. There are also numerous resources and presentations available on our [website](#).



### We want your feedback!

We value our partner suggestions and feedback. If the Hub has provided your organization with services, please take a moment to complete our [feedback survey](#) to help us improve our program.